



## Bathing establishment Fact Sheet

Bathhouse name	AMORE
Address	Viale Europa 23
City	55041 Lido di Camaiore (LU)
Contacts	Phone +39 058466038
Website	<a href="https://www.facebook.com/traversa26/?locale=it_IT">https://www.facebook.com/traversa26/?locale=it_IT</a>

**TESTED BY:** [Handy Social Promotion Association Surpassable](#) in summer 2023

**Please note** The following information refers to the verification date shown at the bottom of each card. **The Association** is not responsible for any significant changes made by the property after the visit.

### Summary

Fact Sheet Bathing establishment.....	1
Arrival at the facility .....	2
Private/public parking.....	2
Pathways from the parking lot to the main entrance.....	2
Reception.....	3
Bar/restaurant .....	4
Internal Pathways s and common services .....	4
Internal Pathways s.....	4
Toilet and shower accessible to guests with reduced mobility.....	5
Changing room.....	6
Beach.....	7
Children's play area.....	8
Swimming pool.....	8
Doctors' Offices/Healthcare Facilities .....	9

Project carried out with the contribution of the




Presidenza del  
Consiglio dei Ministri  
Ministro per la disabilità



## Arrival at the facility

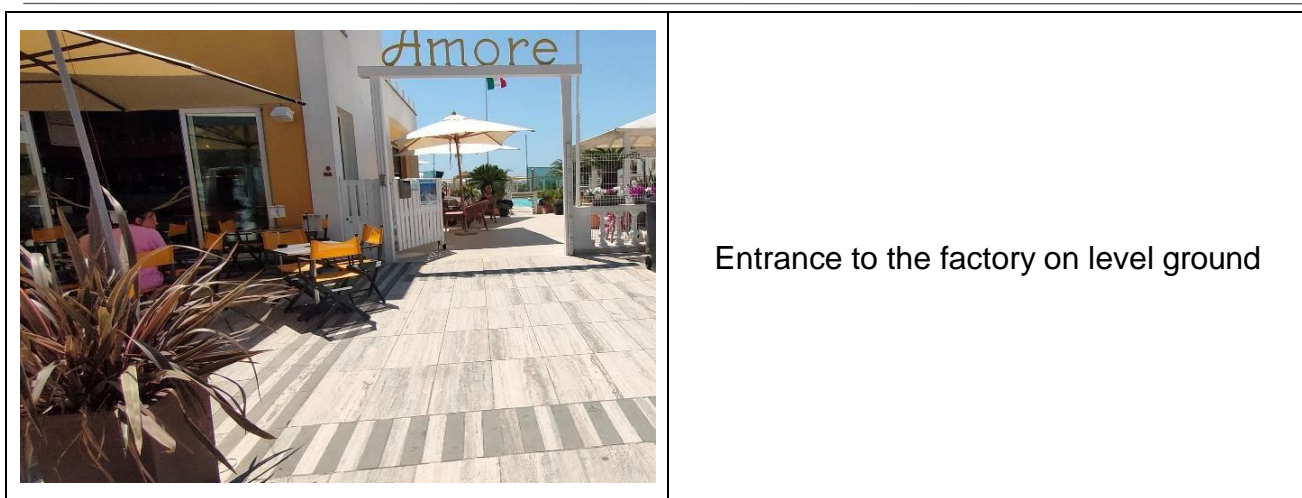
### Private/public parking

Presence of private parking	NO
Type of private car park	Not present
Presence of parking space reserved for people with disabilities	YES in the public car park
Public parking nearby	YES
Type of public car park	asphalt
	Pathways from the public car park to the establishment via the promenade

### Pathways from the parking lot to the main entrance

Pathways from the car park to the entrance	Flat
There are markers and tactile maps	NO
Usable door/entrance width	more than 90 cm



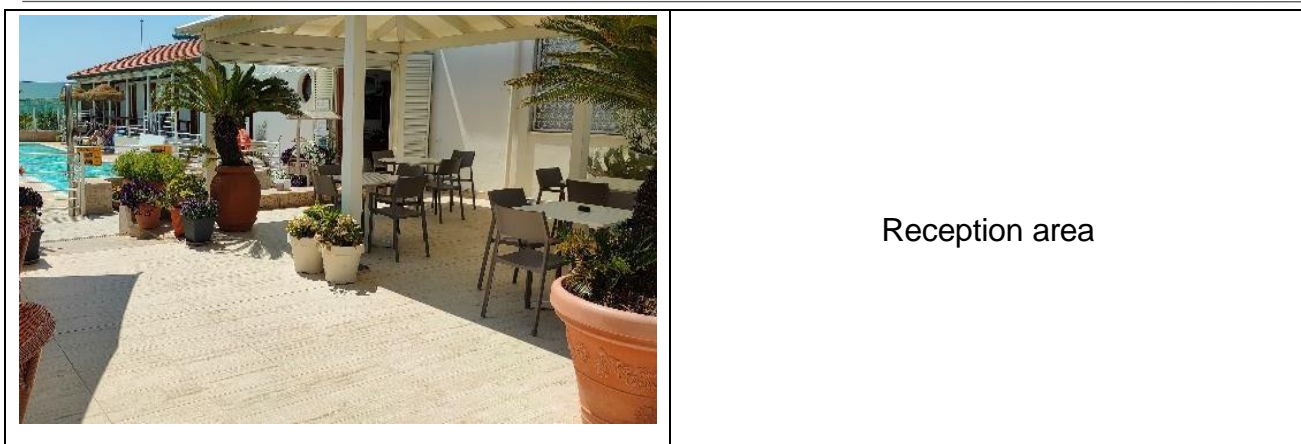


Entrance to the factory on level ground

### Reception

Umbrella booking system	<input type="checkbox"/> Via web <input checked="" type="checkbox"/> By phone <input checked="" type="checkbox"/> On-site
Presence of multilingual staff	YES
Presence of plant plan with key to services available	YES
Presence of visuo-tactile map	NO
Bulletin board/information panels at an average height of 130 cm in a well-lit area and font size at least 14 dpi with a contrast ratio greater than 4.5:1	NO
The staff attended training courses on welcoming people with different disabilities	NO





**Bar/restaurant**

Type of venue	missing
---------------	---------

**Internal Pathways and common services**

**Internal Pathways**

Indicate whether the pathways connecting the entrance to the beach are flat or with ramps in addition to those already described	Obstacle-free paths: from the entrance to the pool you can reach the beach via a short ramp while the toilet and changing rooms via the same ramp and a second ramp 370 cm long and slope 6%
--	--





**Toilet and shower accessible to guests with reduced mobility**

Number <b>of toilets</b> accessible/usable by guests with reduced mobility	1
Access to the premises	From the entrance via 2 ramps: the first one is 205 cm long, 150 cm wide, 14 % slope; second length 370 cm, width 126 cm, slope 6 % with handrail on one side
Usable width of the entrance door	80 cm with small step of 2 cm
WC height	53 cm
Open front toilet seat	NO
Support handles	to the left of the toilet
Flexible hand shower at the side of the toilet	NO
Free space on the sides of the toilet	on the left more than 90 cm right 22 cm front panel over 90 cm
Electric doorbell/phone	YES
Washbasin with space underneath for wheelchair	67 cm
Height from the ground on the bottom edge of the mirror	125 cm
Baby changing table	YES





	<p>Toilet room with reclining handle</p>
<p>Accessible <b>shower</b> available for guests with reduced mobility</p>	<p>NO</p>

**Changing room**



<p>Accessible changing room available for guests with reduced mobility</p>	<p>YES adjacent to the toilet room</p>
<p>Access to the premises</p>	<p>From the entrance via 2 ramps: the first one is 205 cm long, 150 cm wide, 14 %</p>





	slope; second length 370 cm, width 126 cm, slope 6 % with handrail on one side
Usable door/entrance width	more than 90 cm
Size of the dressing room	width 145 cm and depth 183 cm
Presence of a cot	NO
Coat rack height from the ground	Missing coat rack

## Beach

Type of beach	sand
Access to the beach	Flat
Walkway to reach the umbrellas	YES
Type of walkway	PVC
Walkway width	90 cm
	
Removable Platform between the walkway and the umbrella station to facilitate the passage and parking wheelchair	YES
Amphibious beach chair available for helping people with reduced mobility to	YES



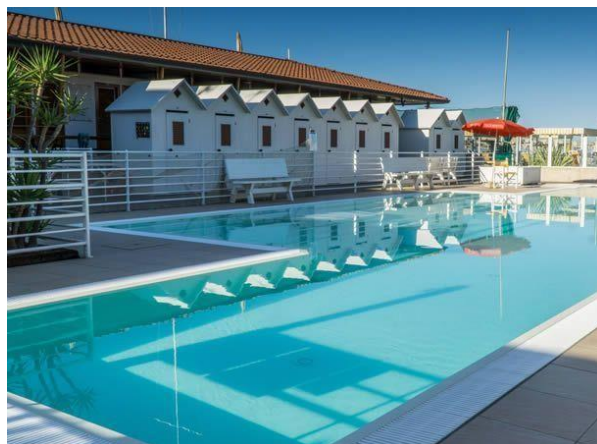
enjoy swimming (owned by the establishment or by association)	
---	--

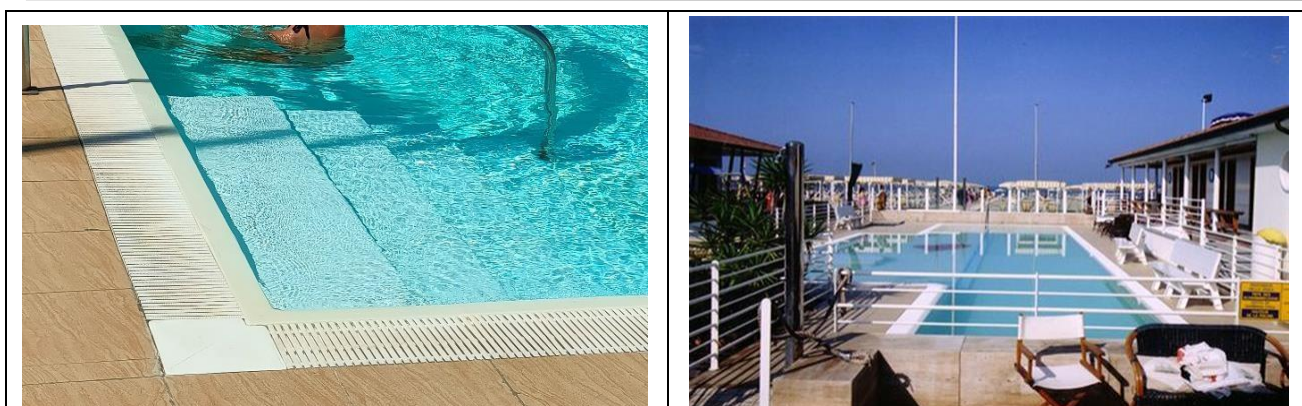
**Children's play area**

Children's play area	Not detected
----------------------	--------------

**Swimming pool**

The property has a swimming pool	YES
Access to the swimming pool	by ramp length 205 cm, width 150 cm, gradient 14 %
Useful width of the entrance gate	110 cm
Access to the pool	via 100 cm wide ramp with 5 steps
Pool depth adults/children	125/90 cm
Bathing aids for guests with reduced mobility	amphibious chair





### Doctors' Offices/Healthcare Facilities

Hospitals near the facility	<b>Ospedale Versilia</b> SS 1, 335, 55049 Camaiole LU Telephone: 0584 6051
Other Healthcare Facilities	<b>Casa della Salute</b> viale Oberdan, 28 c/o hospital pavilion tel. Phone 0584.605200 <b>Emergency Medical Service</b> – Via Sarzanese, 155 CamaioleTel. 0584 616775 <b>Dialysis service c/o Croce Verde</b> Viale Italico at the corner of Via Risorgimento Forte dei Marmi Tel. 05848401 affiliated with ASL

TESTED BY: [Handy Superabile Social Promotion Association](#) in summer 2023

